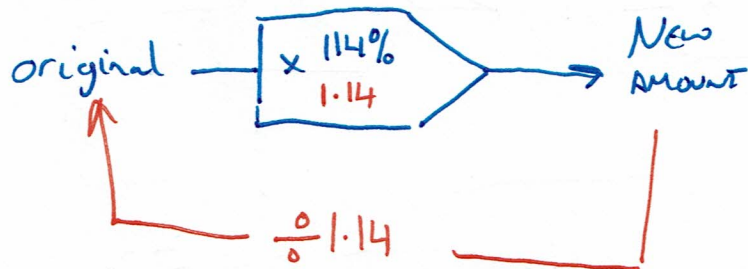


% increase, 14% increase

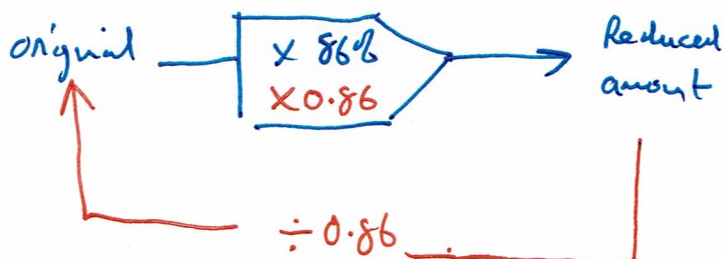
original	New amount
100%	114%



Higher/Intermediate Tier Reverse Percentages

% Decrease, 14% decrease

original	New amount
100%	86%

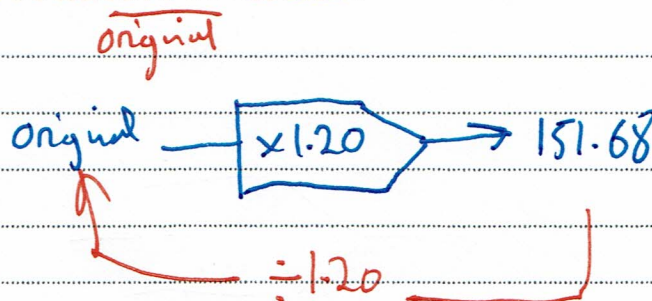


1.

already added

The bill for repairing a washing machine came to £151.68, inclusive of VAT at 20%. What was the cost before VAT was added?

[3]



$$151.68 \div 1.20 = \pounds 126.40$$

B1

M1

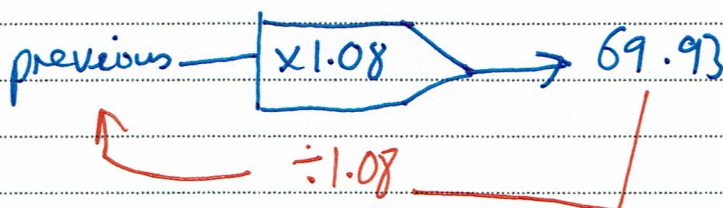
A1

2.

In a competition, Dewi threw the javelin 69.93 metres. This was an improvement of 8% on his previous best throw.

Calculate the length of his previous best throw.

[3]



$$69.93 \div 1.08 = 64.75 \text{ m}$$

B1

M1

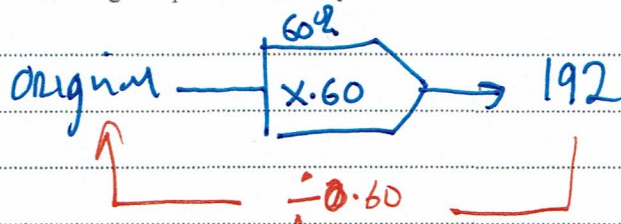
A1

3.

A shop has reduced the price of a bicycle by 40% of its original price.

The sale price of the bicycle is £192.

Calculate the original price of the bicycle.



$$192 \div 0.60 = \pounds 320$$

[3]

4.

The financial press has just published the following headline.

<u>PURKOZI Ltd.</u>
Annual profit £4,760,000
<u>Down 13% from last year</u>

What was the profit made by this company last year?
Give your answer to the nearest ten thousand pounds.

last year $\xrightarrow{\times 0.87}$ 4760000

$\div 0.87$

$4760000 \div 0.87 = 5471264 = \pounds 5,470,000$

↑ K H T U
100

[4]

B1
M1
A1
A1

5.

Complete the table below.

Original amount	After a decrease of	
	40%	2%
£ 820	£492	£ 803.60

Original $\xrightarrow{\times 0.60}$ 492

$\div 0.60$

$492 \div 0.60 = 820$

New 98% of 820 : $0.98 \times 820 = 803.60$

[4]

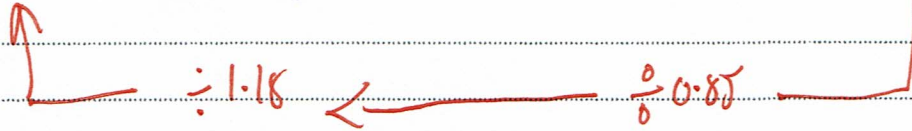
B1
M1
A1
A1

6.

A shopkeeper calculates the selling price of a coat by increasing the manufacturer's price by 18%.

In a sale, the shopkeeper reduced the selling price of the coat by 15%. The sale price of the coat was £90.27.

Calculate the manufacturer's price for the coat.



$$90.27 \div 0.85 = 106.20 \div 1.18 = £90$$

[5]

B1

M1

A1

M1

A1